

GENESEE COUNTY & FLINT HEALTH EQUITY BRIEF

AS OF DECEMBER 23, 2020

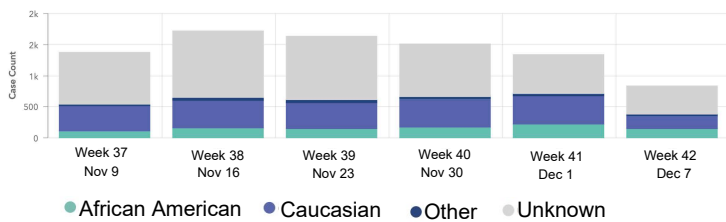
- Genesee County continues to see a **downward trend** in positive cases and volume of testing
- **Mitigation efforts are working!** e.g., mask requirements, limit social gatherings, no indoor dining
- Leaders must continue to stress the importance to **limit non-essential travel and avoid large gatherings in anticipation of Christmas and New Year's Holiday Celebrations**

Trends in the data

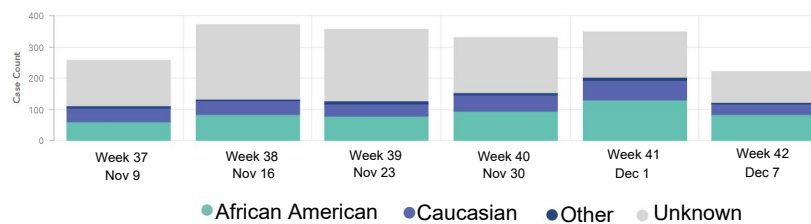
Case Counts By Race: 11/9-12/7

Note: It takes ~3-4 weeks to comprehensively identify and report all cases in a given week

Genesee County



Flint



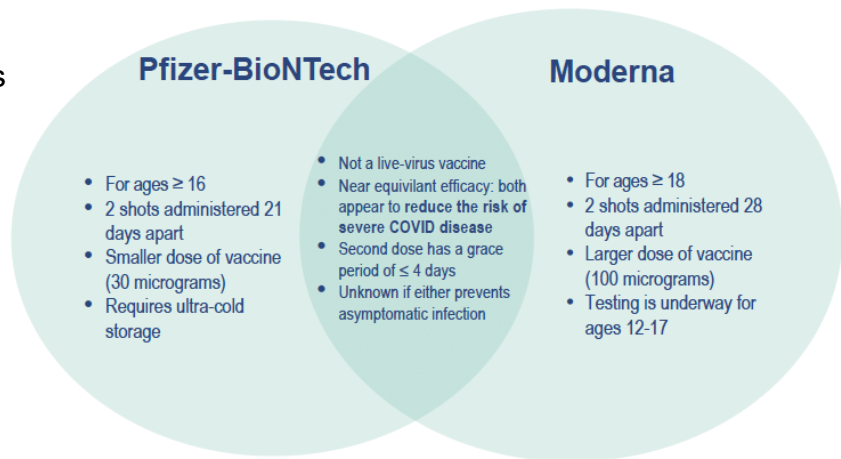
Spread hope not COVID this holiday season!

Gatherings:

- Host and attend virtually with **unlimited Zoom**
- **Drink responsibly:** Alcohol makes it difficult to practice safety measures
- **Monitor for symptoms & follow testing guidelines** after an event
- **Self-quarantine** at home if you have symptoms

COVID-19 Vaccines:

- **Currently:** Health care workers & residents of long-term care homes are eligible to be immunized
- **Next:** Individuals > 75 & front line workers



Recommendations

- **Coordination of efforts** from the Federal government down to local jurisdictions to:
 - Continue community mitigation efforts
 - Equitably distribute approved vaccines
- **Provide funding and general support** for pop-up testing sites and mobile clinics
- **Continue to promote adherence to guidelines;** with an eye toward lifting some restrictions mid-January

Resources

GATHERINGS:

<https://support.zoom.us/hc/en-us/articles/360052451852-Free-meetings-for-the-holiday-celebrations>

VACCINES:

www.michigan.gov/coronavirus/0,9753,7-406-98178_103214---,00.html

www.pfizer.com/science/coronavirus

www.cdc.gov/vaccines/covid-19/info-by-product/clinical-considerations.html

Contributors

Mary Katherine Crawford crawf457@msu.edu | Debra Furr-Holden holdenc3@msu.edu | Heatherlun Uphold upholdhe@msu.edu | Rick Sadler sadlerr@msu.edu | Alan Harris harr1437@msu.edu | Yvonne Lewis yvonlews@gmail.com | Genesee County Health Dpt <https://gchd.us>